

# Giga Pets®

## INSTRUCTIONS

### INTRODUCTION

many years ago in a fantastic kingdom far away, an evil wizard terrorized the land. the ruler of this kingdom, PRINCE GIGA, was good and kind, and with the help of the small creatures of the land he banished the terrible wizard. but the wizard enacted a horrible curse, imprisoning all of the small creatures in tiny jeweled pods and scattering them across the universe.

now PRINCE GIGA'S kingdom is a sad place. each day the prince wanders his kingdom, looking for the jeweled pods so that he may care for the tiny creature trapped inside. only when every GIGA PET everywhere is healthy and happy can the curse be lifted. can you help?

### CONGRATULATIONS!

you are the proud new owner of a GIGA PET, the take-it-anywhere interactive pet! your new GIGA PET is going to need lots of attention to grow up healthy and happy. the healthier and happier your pet is, the higher your score will be! these instructions will help you on your way.

### STARTING THE GAME

to start your game, pull the plastic tab from the back of your GIGA PET. the plastic tab is not part of the toy and should be thrown away. once you turn your GIGA PET on, it should stay on. you never need to turn your GIGA PET off.

### SETTING THE CLOCK

it is very important that you set the clock on your GIGA PET for the correct time. your GIGA PET eats, plays, and sleeps according to a natural schedule. if you don't set the time correctly, your GIGA PET may get confused-- you don't want your pet to sleep all day and keep you awake all night! when you first start the game, your GIGA PET will be in CLOCK MODE. here's how to set the clock:

- 1) the HOUR will be flashing, press LEFT/RIGHT to adjust the hour. when the correct hour is set, press ENTER.
- 2) the MINUTES will be flashing, press LEFT/RIGHT to adjust the minutes. when the correct minutes are set, press ENTER.
- 3) the clock is now set, and you will automatically enter NAME MODE.

### NAMING YOUR GIGA PET

- 1) a flashing bar will appear under the space for each letter.
- 2) press LEFT/RIGHT to search through the alphabet.
- 3) press ENTER to select a letter and move to the next space in the pet's name. you may use up to 12 letters.
- 4) press ENTER twice to accept the current name and return to GAME MODE.

### TURNING OFF THE SOUND

- 1) press MODE to enter CLOCK MODE.
- 2) press LEFT to turn the sound off-- the SOUND ICON will disappear.
- 3) press RIGHT to turn the sound on-- the SOUND ICON will appear again.

press MODE again to return to GAME mode.

### HAPPY BIRTHDAY!

when you enter GAME MODE for the first time, you will see the arrival of your new GIGA PET! every GIGA PET arrives in a different kind of way. your baby KOALA pops out from behind the leaves of a eucalyptus tree.

### RETURNING TO CLOCK MODE

once the game begins in GAME MODE, you can return to CLOCK MODE by pressing MODE until the clock appears.

- 1) if you wish to adjust the clock, press ENTER. the clock will start flashing.
- 2) after you set the time, your pet's name will appear. press ENTER to adjust the name.
- 3) to return to GAME MODE, press MODE until your pet appears again.

### THE GAME SCREEN

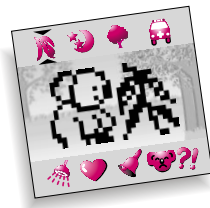
the game screen is your little bear's "home." you will see the pet move around the screen and go about his daily routine, just like a real pet.

press the LEFT/RIGHT keys to select the different ICONS around the outside of the screen. these icons represent all of the different activities that allow you to interact with your pet.

### HOW TO PLAY

just like a real pet, your GIGA PET needs you in order to grow up happy and healthy. at various times, your pet will require a certain kind of attention from you. your pet will make noise and the ALERT?! will light up.

now you've got to figure out what your pet needs! if your pet is hungry, feed it. if your pet is lonely, play with it. if your pet is dirty, give it a bath. there are many different ways for you to interact with your pet. the trick is to figure out what your pet needs from you! use the LEFT/RIGHT keys to move to the activity you want, and press ENTER. here are the activities:



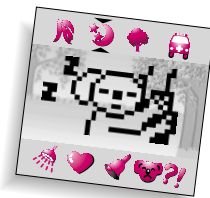
### FEED

when you select this activity, you will be given a choice of foods for your koala. use the LEFT or RIGHT key to select either healthy food or treats. every kind of pet likes different kinds of food. your koala needs milk to grow, and eucalyptus leaves to stay happy.

you can see how hungry your bear is by checking its HUNGER on the SCORE screen. a 100 means your pet has a full tummy-- and a 0 means your pet is famished! if your pet

has a 100 it may refuse to eat. and if it has a 0 may refuse to do anything else until you feed it!

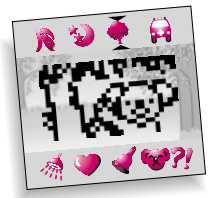
your koala bear will always eat treats, even when it's full! the eucalyptus leaves tastes so good, it's impossible to say no! but be careful, too many treats will make your koala fat.



### SLEEP

select this icon to turn out the light when your pet wants to sleep. your pet likes to take naps during the day. if you turn out the light for it, it will happily go to sleep. at night, your pet will be very tired, and just fall asleep right on the floor. if you want your pet to have good dreams, turn out the light at night, too.

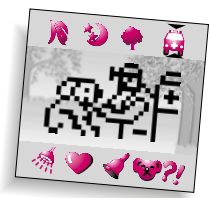
sometimes it's hard to tell when your koala needs to sleep. if you try everything else-- feeding, playing, or cleaning-- and your pet still seems upset, maybe it's time for a little nap.



### PLAY

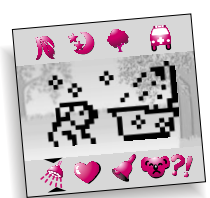
to keep your KOALA healthy and happy, you should play with it often. when you select this activity, your KOALA will play a game with you. here's how to play the tree climbing game:

your KOALA will have a set time limit to climb a tree as fast as possible. you must press the LEFT and RIGHT keys alternating as quickly as possible to make your KOALA climb. if you miss alternating the buttons your KOALA will slowly lose his grip and start to slide down the tree.



### DOCTOR

if your pet's health drops, you can always try a visit to the doctor. but be careful! there's only so much the doctor can do, and your little bear does not like to go. we recommend no more than one trip to the doctor each day.



### CLEANING

sometimes your KOALA bear will leave droppings, and you must clean them up. if there are droppings on screen, select CLEANING to clear them away. if there are no droppings on screen, you can select this activity to give your pet a thorough, all over cleaning. if you want your bear to stay healthy, don't leave droppings on the screen, and don't forget to give your pet a bath at least once a day.



### SCORE

choose this icon to check on your pet's progress. use the LEFT/RIGHT keys to display screens showing your pet's AGE and WEIGHT, HEALTH and HAPPINESS, HUNGER, and DISCIPLINE, and TOTAL SCORE. your koala bear's AGE increases by 1 every day. what seems like a day to you is actually one complete year to your giga pet! a giga pet reaches adult age at about 5 days, and old age at 14 days. a giga pet more than 14 days old is very old indeed!

your pet's WEI GHT will vary depending on your pet's age, diet, and exercise. too many treats and too much sleep will make your pet fat and lazy. make sure your pet gets enough exercise.

HEALTH, HAPPINESS, HUNGER, and DISCIPLINE range from 0 (bad) to 100 (good) and help you determine what your pet needs. if any of these falls below 20, you should take care of your pet right away.

the final statistic, SCORE, is an indication of how well you are doing. the higher your score, the better you are doing. your SCORE is an average of HEALTH, HAPPINESS, HUNGER, and DISCIPLINE.

**TRAINING**  
your pet can do all sorts of interesting things. training your pet to perform tricks on command is very entertaining! select the TRAIN icon and press ENTER. the word REWARD will appear. but don't reward your pet yet! first, press LEFT or RIGHT until the word TRICK appears. now press ENTER again.

a list of tricks will appear. you can press LEFT or RIGHT to search through all the tricks your bear can learn. when you see the trick you want to teach your pet, press ENTER. your pet will try its best to do the trick you asked for.

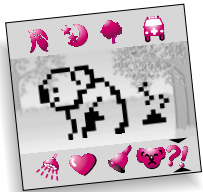
if your pet does not get the trick right, try again! if your pet does the trick correctly, press ENTER again. the word REWARD should appear. press ENTER again to reward your pet with a treat. now your pet knows this trick. congratulations!

if you want your pet to perform its trick at your command, select the TRAIN icon again. now press either the LEFT or RIGHT key until the word TRICK appears. press ENTER. now press LEFT/RIGHT until the trick you want appears on the screen, and press ENTER.



**DISCIPLINE**  
select this activity to discipline your pet. your pet does not like to be disciplined, so you should only discipline your pet if its DISCIPLINE falls below 20. don't select this activity too often, or your koala will become unhappy and unhealthy!

**ALERT?!?**  
when this icon lights up it means your pet needs something. use the SCORE activity to try to figure out what your pet needs: food? sleep? play time? discipline?



**MEETING YOUR PET'S NEEDS**  
if you try to select an activity that your bear does not want to do, it may refuse. try selecting a different activity until you figure out what your pet needs.

**GAME OVER**  
the game is over when your KOALA dies. your pet can die from bad health or old age. if your pet dies from bad health, you should restart the game and try again, taking care to pay close attention to your pet's needs.

your pet can also die from old age. your pet is designed to live for about 2 weeks. however, if you take very good care of your pet, it may live longer.

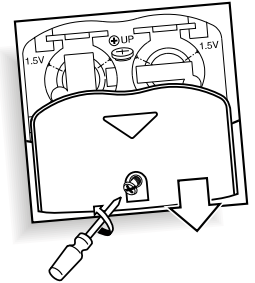


keep your pet's health above 95 and it may live indefinitely.

when the game is over, you will see your pet turn into an angel. you can press MODE to see your final SCORE, and press MODE again to see the angel again.

**RESTARTING THE GAME**  
if your pet dies and becomes an angel, press ENTER to restart the game. if you just wish to start over from the beginning, press the RESET button located on the back of your game.

**INSERTING THE BATTERIES, DEFECT/DAMAGE, etc**  
to activate your giga pets game, pull the plastic tab from back of game.



to insert the batteries, remove the battery compartment cover at the back of the game. (to remove cover, unscrew the cover, then push the cover in the direction of the arrow).

insert two 1.5v "1r44" or "g3a" button cell batteries (battery included), making sure to align "+" and "-" as shown.

**CAUTION:** battery should be replaced by adult. not suitable for children under 36 months, may contain small parts.

**TO ENSURE PROPER FUNCTION :**

- do not mix old and new batteries.
- do not mix alkaline, standard or rechargeable batteries.
- battery installation should be done by adult.
- non-rechargeable batteries are not to be recharged.
- rechargeable batteries are to be removed from the toy before being charged (if removable).
- rechargeable batteries are only to be charged under adult supervision (if removable).
- only batteries of the same or equivalent type as recommended are to be used.
- batteries are to be inserted with the correct polarity.
- exhausted batteries are to be removed from the toy.
- the supply terminals are not to be short-circuited.

**DEFECT OR DAMAGE**

if a part of your game is damaged or something has been left out, DO NOT RETURN THE GAME TO THE STORE. the store doesn't have replacement part. instead, write to us at:

**TIGER ELECTRONIC TOYS REPAIR CENTRE**  
980 woodlands parkway, vernon hills,  
illinois 60061, u.s.a.

in your note, mention the name of your game, your game's model number, and tell us briefly what the problem is. also include sales slip, date, place of purchase and price paid. we will do our best to help.

## 90-DAY LIMITED WARRANTY

tiger electronics, inc. (tiger) warrants to the original consumer purchaser of this product that the product will be free from defects in materials or workmanship for 90 days from the date of original purchase. this warranty does not cover damages resulting from accident, negligence, improper service or use or other causes not arising out of defects in materials or workmanship.

during this 90-day warranty period, the product will either be repaired or replaced (at tiger's option) without charge to the purchaser, when returned with proof of the date of purchase to either the dealer or to tiger.

product returned to tiger without proof of the date of purchase or after the 90-day warranty period has expired, but prior to one year from the original date of purchase, will be repaired or replaced (at tiger's option) for a service fee of us\$4.00. payments must be by check or money order payable to tiger electronics, inc.

**THE FOREGOING STATUE THE PURCHASER'S SOLE AND EXCLUSIVE REMEDY FOR ANY BREACH OF WARRANTY WITH RESPECT TO THE PRODUCT**

all product returned must be shipped prepaid and insured for loss or damage to:

tiger electronics, inc. repair dept.  
980 woodlands parkway  
vernon hills, illinois 60061 u.s.a.

the product should be carefully packed in the original box or other packing materials sufficient to avoid damage during shipment. include a complete written description of the defect, a check if product is beyond the 90-day warranty period, and your printed name, address and telephone number.

**THIS WARRANTY IS IN LIEU OF ALL OTHER WARRANTIES AND NO OTHER REPRESENTATIONS OR CLAIMS OF ANY NATURE SHALL BE BINDING ON OR OBLIGATE TIGER IN ANY WAY. ANY IMPLIED WARRANTIES APPLICABLE TO THIS PRODUCT, INCLUDING WARRANTIES OF MERCHANTABILITY AND FITNESS FOR A PARTICULAR PURPOSE, ARE LIMITED TO THE NINETEEN (90) DAY PERIOD DESCRIBED ABOVE. IN NO EVENT WILL TIGER BE LIABLE FOR ANY SPECIAL, INCIDENTAL, OR CONSEQUENTIAL DAMAGES RESULTING FROM POSSESSION, USE, OR MALFUNCTION OF THIS TIGER PRODUCT.**

some states do not allow limitations as to how long an implied warranty lasts and/or exclusions or limitations of incidental or consequential damages, so the above limitations and/or exclusions of liability may not apply to you. this warranty gives you specific rights, and you may also have other rights which vary from state to state.