

# Pretty Pretty PRINCESS<sup>®</sup>



## WARNING:

CHOKING HAZARD - Small parts.  
Not for children under 3 years.

## INSTRUCTIONS

Ages 5 and up / For 2 to 4 players

## CONTENTS

Gameboard, plastic jewelry box (lid with spinner and mirror), crown, 4 pawns, 21 pieces of jewelry (4 necklaces, 4 bracelets, 4 sets of earrings and 5 rings), 2 jewel sticker label sheets.

## OBJECT

Be the first player to have the crown and a complete set of jewelry in your color (necklace, bracelet, 2 earrings and ring) – but **not** the black ring!

## FIRST TIME YOU PLAY

1. Remove the jewel stickers from the label sheets. Press them onto the crown and the jewelry box as shown on the bottom of the game box.

Match the shapes found on the crown and jewelry box. (The green diamond jewel stickers are only for the crown.)

NOTE: You should never place jewel stickers on skin or clothing.

2. Remove the protective plastic film from the mirror.
3. Carefully unwrap all necklaces, bracelets, earrings and rings. Put them inside the jewelry box.



## SETUP

1. Assemble the jigsaw gameboard. It will go together only one way, in this clockwise color order: Blue, Pink, Green, Purple.
2. Place the open jewelry box with the crown around it in the center of the gameboard. Place the lid nearby, spinner-side up.
3. Choose your jewelry color for the game (pink, green, purple or blue). Sit facing the gameboard corner of that color. Sit facing the gameboard corner of that color.
4. Put your matching color pawn on **any** space on the circular gamepath. (Do **not** place it on a gameboard corner.)

## HOW TO PLAY

Each player spins the spinner. Whoever spins the highest number goes first. Play continues clockwise.

## ON YOUR TURN

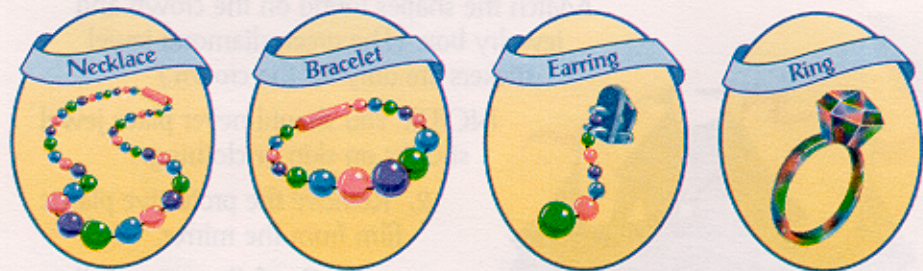
Spin the spinner and move your pawn clockwise around the gamepath the number of spaces shown on the spinner. Follow the directions for the space you land on. Your turn is then over.

NOTE: Players can share any space.

## GAMEBOARD SPACES

### JEWELRY SPACES: Necklace, Bracelet, Earring or Ring

Pull that piece of **your color** jewelry out of the jewelry box and put it on. If you already have that piece of jewelry, your turn is over.



### NOTE:

You may take **only one earring** each time you land on an Earring space. Carefully bend the earring clip open and then squeeze it closed to fit on your ear.

### CROWN SPACE:

Take the crown from either the jewelry box or from the player who is wearing it and put it on.



**BLACK RING SPACE:** Take the black ring from the jewelry box or from whoever is wearing it. You **must** wear the black ring until you can get rid of it.



### PUT ONE BACK SPACE:

If you have the black ring, now you **must** get rid of it by putting it back in the jewelry box. If you do **not** have the black ring, you **must** return **any** one of your jewelry pieces (an earring, a bracelet, a necklace or a ring) or the crown to the jewelry box. If you have nothing to return, your turn is over.



### TAKE ANY PIECE SPACE:

Take any piece of **your color** jewelry from the jewelry box or take the crown from the jewelry box (or from the player who is wearing it) and put it on.



## HOW TO WIN

Collect a complete set of jewelry in your color (necklace, bracelet, ring and both earrings) plus the crown — **but not the black ring** — and you've won the game! Now as you wear the crown and all of your color jewelry, turn over the spinner and look at the Pretty Pretty Princess you see in the mirror!

